



# QQ English®

QUALITY . FREEDOM . EMOTION

CEBU PHILIPPINES  
ESL, IELTS, TOEIC, KIDS & FAMILY CAMPS



📷 qqenglishofficial

🌐 <http://ph.qqeng.net>

QQ English®



## CONTENTS

1. CEO Introduction
2. About QQEnglish
3. I.T. Park Campus
4. Seafront Campus
5. Milestones
6. Teacher (Training Flow)
7. Curricula
8. Daily Schedule
9. Study Plan

# From Impossible to Possible to Speak English !

If you want to improve your English speaking skills,  
you must constantly practice to bring yourself closer to your goal.

How can I effectively improve my English through practice?

The best way is to immerse yourself in an environment of English speakers  
and improve your English language skill through professional teachers.

And QQEnglish has created a complete English environment  
for you to get closer to your international goals.



**Raiko Fujioka**  
QQ English Founder CEO



**Wang Jun**  
QQ English Co-Founder COO

“ Let English change your life!

The purpose I chose to come to the Philippines to learn English is to communicate directly with the Italian clients who have business dealings with me. Since then, I have travelled outside Japan. After the improvement of my English skills, I was able to create QQEnglish with more than 1,000 partners from all over the world. Who would have thought that the QQEnglish language school, with branches in 7 countries, started from a courier company? So, that's it. English dramatically changed my life! ”



## About QQEnglish

QQEnglish was founded in 2009. "Quick & Quality" is the teaching philosophy of QQEnglish and providing convenient and efficient education base for global youth and adults is its focus. In Cebu City, the Philippines, there are two teaching bases with a total area of more than 10,010 square meters. With more than a 1,000 teachers, we are providing students with efficient and effective one-on-one education. At present, we have interns from China, Japan, South Korea, Russia, Brazil, Iran, Taiwan, Vietnam, Thailand, Middle East, and other non-native English speaking countries and regions.

### Best and Safest Locations in Cebu City

An international economic zone and a resort zone, guaranteeing an international living environment.



Cebu I.T. Park Campus



5000 square meter  
teaching base



can accommodate  
250 students



Seafront Campus

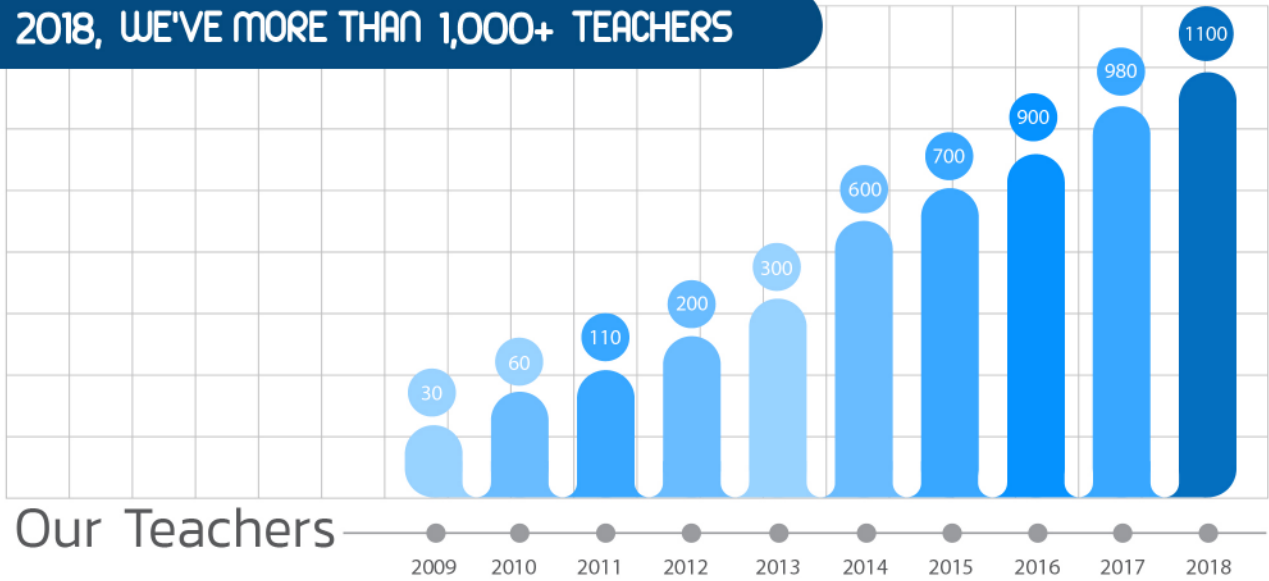


5010 square meter  
teaching base

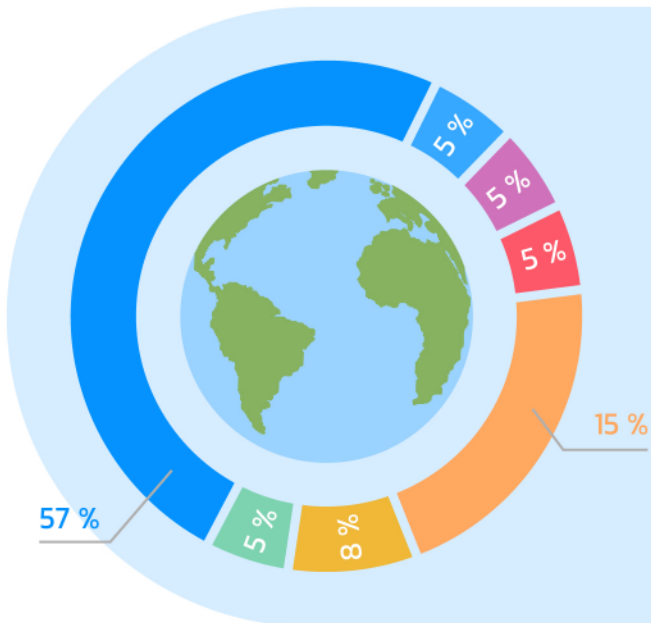


can accommodate  
300 students

**IN 2018, WE'VE MORE THAN 1,000+ TEACHERS**



**QQ NATIONALITY PERCENTAGES**



- 57% Japanese Students
- 5% Vietnamese Students
- 5% Chinese Students
- 5% Russian Students
- 8% Korean Students
- 5% Other Nationality
- 15% Taiwanese Students



**Course is Good for :**

Adults, children, and professionals  
(Callan, Business English, Smart kids, TOEIC, IELTS)

**Stage Play Material :**

Lapu Lapu Hero and Alice in Wonderland

**Underage Management :**

Semi-Spartan management style for underage student entries and exits.

**International Staff**

We have professional interns from over 10 nationalities who are happy to assist students and the quality of their study tour. Whether the students feel unwell during the study tour or they're having any troubles, they can ask the staff for help. Students can easily learn and enjoy their time at the QQEnglish language school.



# I.T. Park Campus



IT Park is a famous business park in the center of Cebu island, where foreign companies can be usually found. Our school is located in the Skyrise 4 building. The 7th to the 11th floor belongs to the jurisdiction of the school. Student's needs such as meals, classes, and medical can all be met. This campus can accommodate around 250 students, and is the largest Japanese school for teaching the English language.

**The purpose of the school is to provide every student with a safe, high quality learning environment; ultimately creating high quality English schools.**

**Address :** 8th Floor, Skyrise 4, I.T. Park, Apas Lahug, Cebu City, 6000, Philippines

**Students' ages :** above 18 years old, mostly business professionals.

**Staff :** Administrative staff, International staff, QTY & Q Friend Consultancy staff, Kitchen staff, Maintenance staff, Cleaning staff, Medical staff.

**Provisions :** lockers (students have to bring their own locks), multinational cuisine, fruit festivals, student activities, Internet, school shuttle buses.

**Challenges & rewards :** English policy on Tuesdays, daily diary submission, weekly rewards for full attendance, rewards for full attendance of night group classes, rewards for full attendance for the entire study duration



## ONE-ON-ONE CLASSROOMS



The open classroom on the 10th floor of the IT.Park campus gives the atmosphere of a Western cafe. Studies have shown that ambient noises can be more conducive to the concentration of the brain. Exposure to ambient noises can force the listener to focus more and listen more carefully.

The 108, one-on-one, classrooms in the school are all equipped with computers. When students encounter problems with the English language and they do not understand during the class, teachers can search for information online quickly and easily. In one-on-one classrooms, teachers and students can develop English-intensive courses without having to worry about others. After the one-on-one targeted training, students can communicate with classmates in any of our 13 classrooms designated for group classes.

## MULTIMEDIA ACCESS IN EVERY CLASSROOM



# School Facilities

## Spacious, Quiet Study Place

There are many learning areas in QQEnglish that can be used, such as QQCafe and lounges, from 7 in the morning to 10 in the evening. The study room on the 8th floor is also very popular with our students. It's particularly quiet there and it's not only suitable for learning English but for using computers to access information as well.



## Dining Area International Exchange Platform for Students and Teachers – QQ Cafe

QQCafe offers three meals a day along with juice and snacks. During meal times, teachers and students dine here. So even if it's during breaktime, it is still a place where students can continuously learn English.



International Staff



Reception Area



Reception Area



School Clinic



Fitness Center



Swimming Pool

# Dormitory Environment



## Park Vista Villa Dormitory

### European and American Share House Style

About a 10-minute walk from the school building is our dormitory area where school buses pass by every day. The accommodation environment of the share houses is similar to that of the share houses in Europe or US. Student bedrooms are independent, and the dormitory building is equipped with public areas such as bathroom, kitchen, and living room. The Mango House in the dormitory area is open to self-study and students who want to cook. This dormitory building is managed by our staff members. Student dormitories are divided into single rooms, double rooms and quadruple rooms for students to choose.

### Dormitory Provisions :

Wi-Fi, refrigerator, washing machines, water dispenser, communal kitchen, microwave, and TV.

Some dormitory buildings have a separate kitchen.



Mango Self-Study Area



Laundry Area



Bathtub



Single Room



Twin Room



Quad Room

## QQHouse Independent Female Dormitory



### Independent Female Students' Accommodation Area

QQHouse is a female dormitory area, located between Park Vista dormitory area and where our school is, it is about a 5-minute walk. School buses are arranged, and available room types are double and quadruple rooms. The kitchen, study room, and bathroom are common areas.



Common Kitchen



Common Bathroom



Quad Room

Dormitory Provisions :  
Wi-Fi, refrigerator, laundry area, water dispenser, public kitchen, microwave oven. The dormitory building is equipped with landline telephones, you can contact the school directly for any needs.

## QQEnglish Shuttle Bus

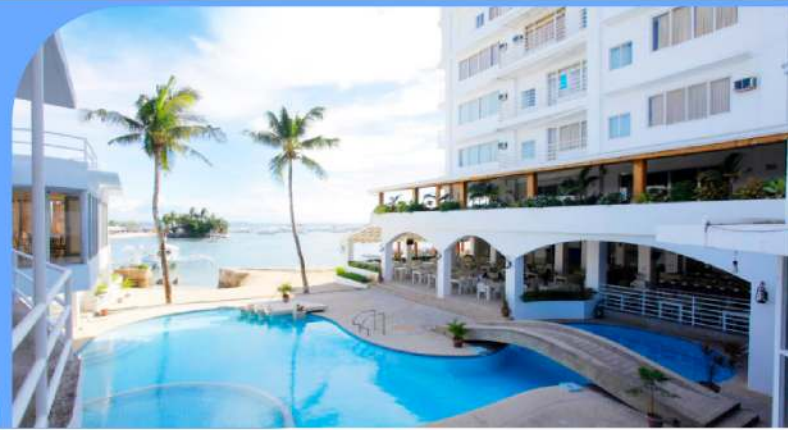


"Jeepney" is the most common means of transportation in the Philippines, and one of QQEnglish's three school buses is a Jeepney. The main task of this school bus is to pick up the new arrivals on weekends, and to transfer students between the school and the dormitory area between Mondays and Fridays, mornings and evenings.



# SEAFRONT CAMPUS

On a lounge chair, by the sea, reading. Such a pleasant experience is not only for successful people but for the daily life of QQEnglish students in our Seafront Campus as well. This campus is located at the Mactan Island Resort in Cebu where it's filled with a natural and relaxed atmosphere. The campus combines accommodation, dining, lectures, gymnasiums, swimming pools, and other areas to make life easier and more enjoyable for students.



## One on One Classroom.....

Our one-on-one classrooms feature a semi-open design. The desktop computer is still the standard configuration of the classroom. When the course is in progress, finding and displaying information becomes easier, and with help of third-party softwares, students will learn more quickly and our teachers can use every second in the class effectively.



## International Small Group Courses .....

The English proficiency test on the first day of enrollment will determine with whom the student's group will be. If one-on-one courses achieve the most efficient input of knowledge, then group discussions with other nationalities are definitely the fastest and most effective way to test the output.



## Professional Chef Team with Three Meals Daily.....

We have a professional Japanese chef to cook three meals a day for our students. To take care of the different eating habits of students from various countries, the chef regularly updates the menu to add dishes to satisfy the dietary taste of students of all nationalities.



## QQCafe Dining Area.....

Another area where students and teachers can talk outside of the classroom QQ Cafe is a shared dining area shared by teachers and students. Therefore, as long as students still want to communicate with their teachers, they will have the opportunity to do so whenever they want.



## Gym & Fitness .....

The QQ English seafront campus has a dedicated leisure and fitness area. It is equipped with a full range of fitness equipment and professional fitness instructors. It also offers Zumba dance classes and quiet yoga classes for girls. If you don't like the sweaty feeling, swimming in the Philippines during the four seasons is a good fitness option.



## Convenient Store .....

Purchase of daily necessities & school supplies at school. School open convenience stores sell swimwear, sunscreen, mouth-wash, phone recharge cards, notebooks, ballpoint pens and other items to meet the needs of student life supplies and school supplies.

# School Facilities

## Study Room



The soundproofed, floor-to-ceiling windows provide a spacious and quiet study room for the students in our Seafront Campus. The study room is open from 06:00 am to 12:00 am. Students living with other dormmates can complete their day's work here.



## School Environment



International Staff



Beach Area



Swimming Pool



Billiard



Table Tennis



Laundry Area



Clinic



Activity Registration Area



Resting Area

# Dormitory Environment/

## Single, Twin, Quad, Hex Rooms



There are single rooms, twin rooms, quadruple rooms, and hexa rooms. Students can choose their accommodation type according to their personal living habits and budget before entering the school. The double, quadruple, and hexa dormitories have bunk beds. The quadruple and hexa dorms are en-suite while the single and twin dorms have access to a shared single bathroom in the dormitory area.



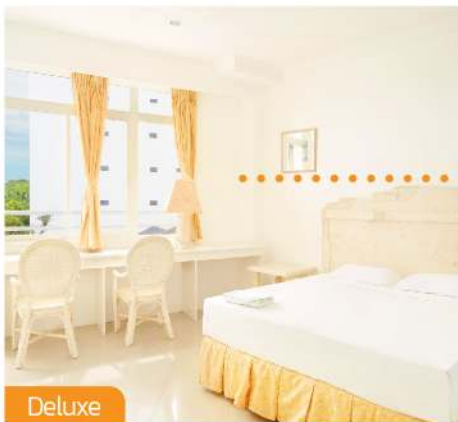
Single



Quad



Hexa



Deluxe

## Deluxe Room & Executive Room



The school retains the original hotel's sea view room, which allows parents and couples to enjoy a good stay while studying. The sea view and interior design are comfortable and spacious. Parents and couples will not be disturbed during the stay because of the independence of the room. Of course, adult students who like the sea view room can also choose to stay. Each of these rooms are equipped with showers, toilets, air conditioners, safes, wardrobes, tables and chairs, and other supporting facilities. (Executive Room has a bathtub)



Executive



### Dormitory Provisions :

- Card key and locker (locks must be brought individually)
- Refrigerator : for rent P500/week
- Hair dryer : for rent P200/week (P100 deposit)
- Daily necessities: tissues (only provided once)
- Hangers : 5 pcs
- Wi-Fi



# How we recruit teachers



Resume screening



Interview+Demo teaching lesson



Hired

TESOL

TESOL training



Material trainings



Giving real lesson to students



Completed finished all trainings and start giving real lessons

## Training of Team

## Training / Development of Teaching Materials



### Lorraine Warne

QQEnglish Training Instructor

Linguistics graduate from the University of Cambridge

Master of Applied Linguistics and Neurolinguistics

Graduate of UK's prestigious Cambridge Language Management Program.

TESOL Training Specialist. She is authentic professional language instructor that trains professional teachers and have made many TESOL holders.



### James Webb

QQEnglish Training Instructor

English education expert

Born in London, England; a linguistics graduate from Oxford University, psycholinguistics from University College London, and winner of the George Vuorufu linguistics award at Oxford University; he's in charge of making study materials and training teachers.



### Yoshito Miyosawa

QQEnglish Training Instructor

English education expert, and a full-mark in TOEIC lecturer

Graduated from Aoyama Gakuin University, Cambridge / RSA CELTA qualification

holder accredited by the Royal Academy of Sciences and is a specialist in

English education at international companies such as Panasonic, Kodak and

Epson. Currently working as a consultant and lecturer, and has authored many

books including the New TOEIC Handbook and TOEIC Test First Step Seminar.

《New TOEIC® Handbook》《TOEIC® Test First Step Seminar》

《QQ English On-line Course Books One-on-One》

# LEVEL ASSIGNMENT AND CRITERION



- Four aspects are tested to understand the current level of the student, namely listening, speaking, reading, and writing.
- The student's learning needs will be arranged and based on the test results.



## CURRICULUM

**CALLAN** QQEnglish is officially certified by main Callan school. (Callan Method)  
Please proceed to page 5 for further information.

**TOEIC** **TOEIC Test**  
The primary focus of this curriculum is to prepare students with effective strategies to answer questions and enable them to take the test with confidence

**BASIC** **QQE Basics (Basic English Grammar)**  
Original curriculum specialized in one on one lessons. Aside from training your basic English, it focuses on four aspects: speaking, listening, reading, and writing. By the time students have finished Level 5, they will have understood grammar that is usually completed in high school.

**IELTS** **Special Training for IELTS**  
Students who want to be better prepared for the IELTS test should consider taking this curriculum as it develops the comprehensive English skills specialized for speaking which is a weak point for many new students.

**Reading/Writing**  
This teaches students techniques about reading and writing; summarizing topics or understanding a new word based on context.

**Business**  
Professionals who want to equip themselves with an English language skill for the international market will find this curriculum important. They will learn professional business expressions and vocabularies for responding e-mails, answering phone calls, and doing presentations through roleplaying.

**Speaking**  
Students learn about basic grammar, vocabularies, and phrases through conversation practice in this curriculum. It improves the student's expression skills during a conversation about certain topics through learning grammar and phrases which are frequently used in daily life.

**News**  
Students will learn pronunciations, expressions, and vocabularies through news articles in this curriculum. They will read articles aloud and discuss it with the teachers so that they can increase their conversational skills.

**Listening**  
This course strengthens the listening skill of the student through the use of wide range of textbooks from daily conversation to global news. It is also effective for individuals who want to prepare for TOEIC examination.

**Topic Conversation**  
Mainly focusing on teaching the skill of expression. It can improve your communication skill through discussions and exchanging opinions which are relevant.

**Pronunciation**  
Many foreign students have a difficulty pronouncing words. This curriculum teaches phonetics and the proper way to pronounce.

**Travel English**  
Students who are avid travellers will find this curriculum of interest. It teaches conversations that may be encountered on their travels.

# Schedule



Schedule Time	Group A	Group B
07:30-08:00	Breakfast	
08:00-08:50	One to One (1:1)	Breakfast
09:00-09:50	Group lesson	One to One (1:1)
10:00-10:50	One to One (1:1)	Group lesson
11:00-11:50	One to One (1:1)	One to One (1:1)
12:00-12:50	Lunch	One to One (1:1)
13:00-13:50	One to One (1:1)	Lunch
14:00-14:50	Group lesson	One to One (1:1)
15:00-15:50	One to One (1:1)	Group lesson
16:00-16:50	One to One (1:1)	One to One (1:1)
17:00-17:50	Rest Time	One to One (1:1)
18:00-18:50	Dinner	Dinner
19:00-19:50	Optional Class	Optional Class
20:00-20:50	Optional Class	Optional Class



- Students can sign up for special night lessons on the front desk.
- Online courses can be given after graduation if the attendance rate of the during the study period reaches the specified amount (1 session/week)
- There will be an English proficiency exam every 4 weeks to measure the level of the student's English skills.
- The information about the exam will be posted on the school bulletin board.
- After the exams, students will receive courses that fit their English skills.



### Monthly Activity

In addition to cultivating their English proficiency, students will also expand their social networking skills. They will learn to get along with people from different backgrounds, cultures, etc. They will be able to diversify their taste in art. They will improve their leadership skills.



### Qty & QFriends

Let's talk to Q friends about struggles abroad and new study methods. Q Friends will always be there for you. You can openly talk to them about your worries and ask for studying tips as well. Make sure to speak in English!



### Welcome Party

Students who enrolled on the same day are encouraged to communicate with each other. There will be a welcoming party held at night for the new students. New students can interact with new friends and teachers, introduce themselves, participate in games, and eat delicious food.



### School Doctors

We have a clinic in our school. School doctors can perform check-ups in the clinic for free. If it's an emergency, we can refer them to hospitals in Lapu-Lapu City or in Cebu City. \*The Seafront Campus consultation is for three times a week, we can refer them to hospitals in Mactan.



### Graduation Party

Every Friday, there is a graduation party. We award certificates to graduates and there will be speeches from teachers and a group photo with all the graduates. Some graduates will show off their new English skills through a heartfelt speech.

# Study Plans

You can choose your ideal plan that fits your preferred schedule.



## Standard Plan :

Maximum 10 lessons / day

This plan combines 6 one-on-one lessons with 4 group classes. The students can learn 4 aspect equally : reading, writing, listening, and speaking. They can also choose to take Callan. The curricula of the students are determined by their goal and the result of the their level test. This plan is recommended for students who are capable for long hours of study in a day.

Outline	Duration	Recommended for
6 hours of one-on-one classes/day 2 hours of small group classes/day 2 hours of big group classes/day Maximum 10 hours lessons / day	From 1 week up to 48 weeks stay	<ul style="list-style-type: none"> <li>Improving the English language skill.</li> <li>Studying abroad in native English speaking countries.</li> <li>Working holidays</li> <li>Enjoying international exchanges.</li> </ul>

## Light Plan :

Maximum 8 lessons / day

This plan combines 4 one-on-one lessons with 4 group classes. It is suitable for the student who wants to be exposed to real English. This plan does not include Callan, TOEIC, IELTS, and Business lessons.

Outline	Duration	Recommended for
4 hours of one-on-one classes/day 2 hours of small group classes/day 2 hours of big group classes/day Maximum 8 hours lessons / day	From 1 week up to 48 weeks stay	<ul style="list-style-type: none"> <li>Improving the English language skill.</li> <li>Working holidays</li> <li>Having more free time.</li> <li>Fewer hours of study.</li> </ul>

## TOEIC Special Training Plan :

Special curriculum created to prepare students for the TOEIC exam. 8 hours of special training with teachers who have undergone training for teaching TOEIC classes. Students can also take Callan in this plan. Weekly tests for students so they get used to TOEIC exams.

Outline	Duration	Curriculum
6 hours one-to-one lessons / day 2 hours group lessons / day 2 hours of big group classes/day	From 1 week up to 48 weeks stay	TOEIC TEST Strengthen TOEIC TEST Speaking TOEIC TEST Vocabulary News Group Listening, Group Reading Callan Method*

## IELTS Special Training Plan :

This plan consists of a total of 8 hours of study. It focuses on improving comprehensive skills in addition speaking and writing to prepare students for IELTS. This plan is recommended for students who will take the IELTS test for the first time.

Outline	Duration	Curriculum
4 hours of IELTS classes/day 2 hours of skill training requirement for IELTS 1 hour of a speaking class 1 hour of a Callan class	From 1 week up to 48 weeks stay	IELTS Speaking, IELTS Phraseology (Vocab & Speaking) IELTS Test Preparation (IELTS 4 skills Practice) IELTS Test Preparation 2 (IELTS 4 skills Practice) Topic Idiom, Callan Method ESL Speaking

## Study Abroad (Family Plan)



Teachers teach children using original curricula by stimulating children's innate intellectual curiosity. Parents can have classes at the same time with their children. Same booth or nearby booths can be arranged or prepared so the family can enjoy a day of learning together.

Outline	Duration	Curriculum
Children (5+ years old) : 6 hours of one-on-one classes Parents : 6 hours of one-on-one classes	From 1 week up to 48 weeks stay	Talking Time Smart English Smart Starter Good English Magic Phonics

\* Parents can match the class time of their children.  
\* They can also choose to take the classes together.



# QQ English®



QUALITY



FREEDOM



EMOTION

**QQ English®**

**CEBU PHILIPPINES**

**ESL, IELTS, TOEIC, KIDS & FAMILY CAMPS**

I.T. Park : 8th floor Skyrise 4, Apas, Cebu, Philippines

SeaFront : Looc Maribago, Lapu-Lapu City, Cebu, Philippines

☎ (+632) 479 9042

✉ info@qqeng.com

🌐 <http://ph.qqeng.net>

📷 qqenglishofficial